



# VAARICOM-MD1

## Diver Intercom User's Guide



Planet Scuba India Pvt Ltd No.1315, Double Road 2nd Stage Indiranagar Bangalore – 560 038.

Tel: +91-80-41573939 Email: [sales@planetscubaindia.com](mailto:sales@planetscubaindia.com) [www.planetscubaindia.com](http://www.planetscubaindia.com)



---

# WARRANTY



## *LIMITED WARRANTY*

The MD1 is fully warranted against defects in materials and workmanship for a period of one (1) year from the time of purchase. Our obligation under this warranty is limited to the replacing of any part or parts which prove to our satisfaction to have been defective, and which have not been misused or carelessly handled. Labor is warranted for one (1) year from time of purchase. The complete unit and/or part must be returned to our factory, transportation charges prepaid. We reserve the right to decline responsibility where repairs have been made or attempted by other than an Planet Scuba India factory-trained service center or properly trained personnel. In no event shall Ocean Planet Scuba India be liable for consequential damages.

Thanks, you for your purchase.

---

# Definitions of Signal Words and Terms Used in this Guide

---

The original language of the Manuals is English. Translation into other languages will be provided upon request. may charge a fee for these services.

Throughout this user guide we will use certain words to call your attention to conditions, practices or techniques that may directly affect your safety. Pay particular attention to information introduced by the following signal words:

## **B DANGER**

**This word indicates an imminently hazardous situation, which if not avoided, could result in death or serious injury.**

## **B WARNING**

**This word indicates a potentially hazardous situation, which, if not avoided, could result in death or serious injury.**

## **B CAUTION**

**This word indicates a potentially hazardous situation, which if not avoided, may result in minor or moderate injury. It may also be used to alert against unsafe practices.**

## **NOTICE**

**This word is used to address practices not related to personal injury.**

This operation user guide contains important safety information and should always be available to those personnel operating this equipment. Read, understand, and retain all instructions before operating this equipment to prevent injury or equipment damage.

If you sell or loan this equipment to another person, be sure that this user guide accompanies the gear when you transfer possession to them

# Important Information—Please Read!

---

Your new MD1 Two-Diver Air Intercom represents state-of-the-art technology and innovation—the choice of discriminating divers throughout the world. Please take the time to read this owner's manual. With proper care and use, your MD1 will provide you with the ultimate in high-quality communications.

The following guidelines and illustrations are presented to assist you. If you still need additional information, do not hesitate to confer Planet Scuba India or representative. If you are not able to adequately obtain service, contact Planet Scuba India, 1315, Paramahansa Yogananda Rd, Eshwara Layout, Indiranagar, Bengaluru, Karnataka 560008

Email: sales@planetclubindia.com

## Introduction

The MD1 is a compact, self-contained, Two-Diver Air Intercom providing 2- or 4-wire communications between the operator and one or two divers. *Please note that standard 4-wire cable is necessary when using this product in the 4-wire mode.*

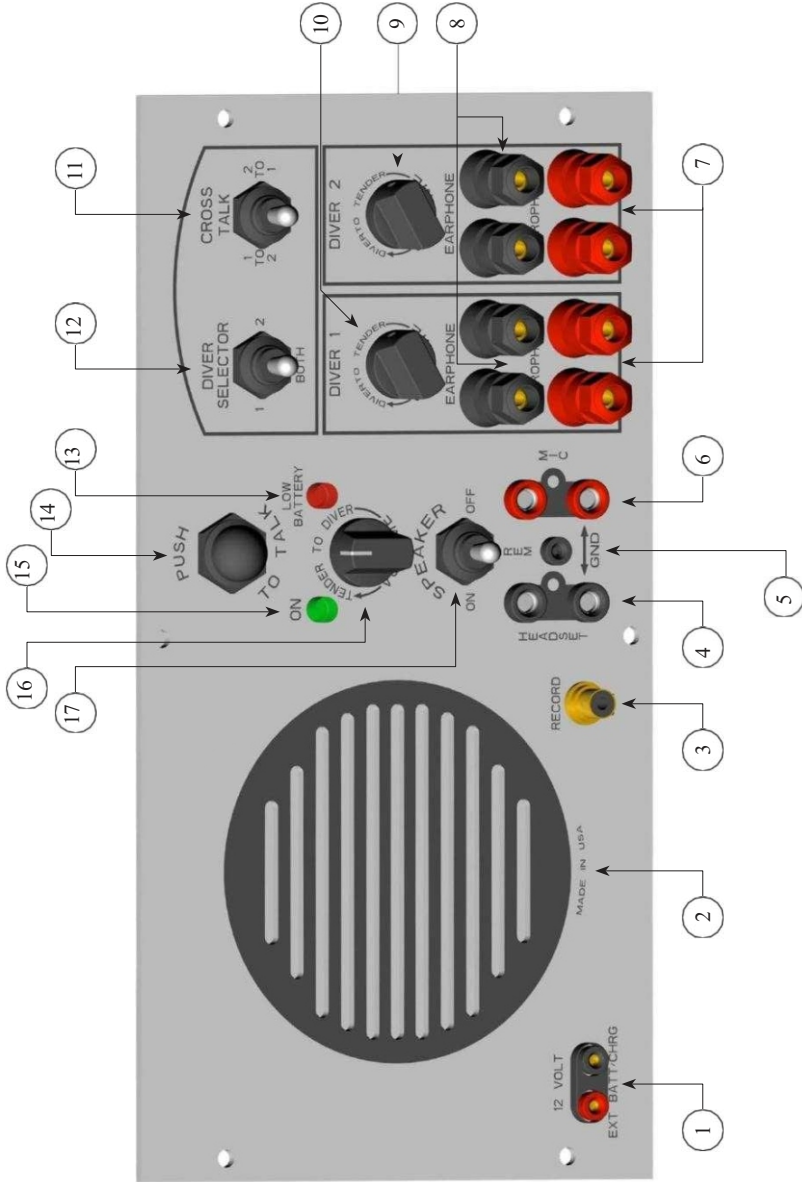
This manual covers Specifications, Operating Instructions, 2-Wire or 4-Wire Communications, Batteries, Helpful Hints, and Warranty Information.

## Equipment Specifications

<b>Battery Life:</b>	12 hours nominal (depending on the number of divers and/or volume levels)
<b>Battery Type:</b>	Li-ion
<b>Power Output:</b>	20 Watts into 4 ohms
<b>Frequency Response:</b>	600 to 12,000 Hz
<b>Front Panel:</b>	1/8" aluminum, chemically-treated and coated with a tough, durable, urethane finish to withstand the marine environment
<b>Size:</b>	Width: 11 3/4" Height: 6 1/8" Thickness: 1/8" aluminum 6061-T6

---

# Panel Functions



---

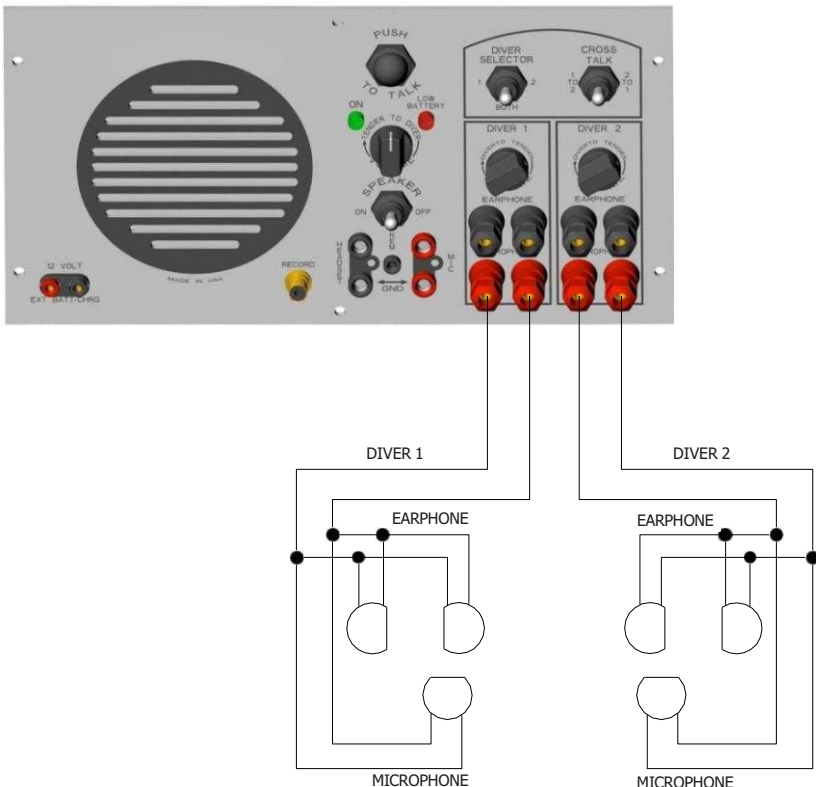
<b>1. External Battery/Charger 12 Volt</b>	Allows tender to use a 12-volt alternate source, or charge the rechargeable battery from the front panel.
<b>2. Panel Speaker</b>	Heavy-duty panel speaker provides maximum audio power for overriding surrounding noise.
<b>3. Recorder/Out</b>	Permits tender to record diving operations. Female RCA/phone connector.
<b>4. Headset</b>	Allows the use of a headset.
<b>5. REM/GND</b>	Remote push-to-talk receptacle (used with headset w/ptt).
<b>6. Mic</b>	Used with hand-held microphone or headset w/mic).
<b>7. Microphone</b>	Banana-style connectors. Permits hook-up for either 2-wire or 4-wire communications (see Fig 2 & 3).
<b>8. Earphone</b>	Allows tender to set intercom up for 4-wire (round-robin) mode (see Fig 3).
<b>9. Diver to Tender Volume 1</b>	Controls volume of diver #2 to tender.
<b>10. Diver to Tender Volume 2</b>	Controls volume of diver #1 to tender.
<b>11. Cross Talk</b>	Used in 2-wire mode to cross-talk divers.
<b>12. Diver Select</b>	Allows tender to control communications to either diver #1, diver #2, or both divers.
<b>13. Low Battery</b>	Low battery indicator.
<b>14. Push-to-Talk (PTT)</b>	Switch used in 2-wire mode by tender to talk to divers.
<b>15. Green LED</b>	Indicates power ON.
<b>16. Tender to Diver Volume</b>	<b>Turns unit ON</b> and controls tender volume down to both divers.
<b>17. Speaker On/Off</b>	Allows tender to turn front panel speaker ON or OFF.

---

# 2-Wire Mode

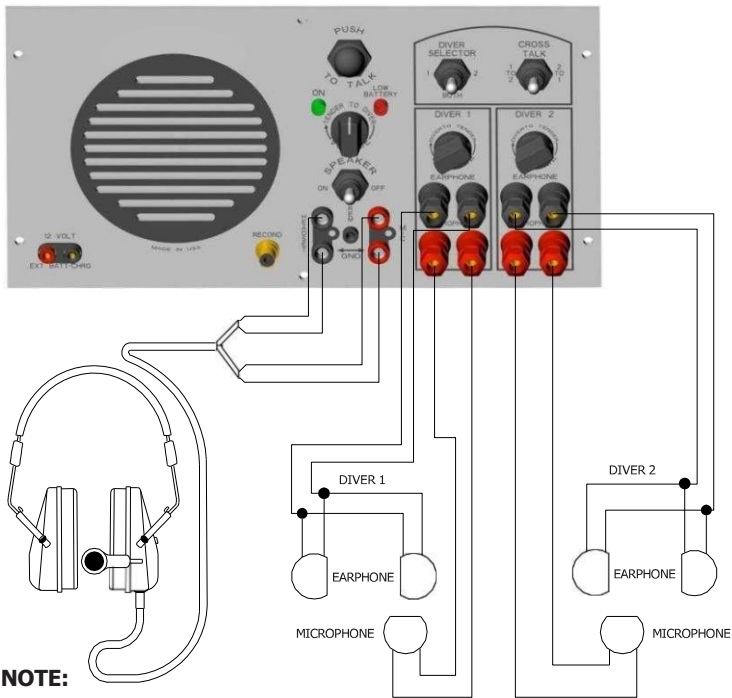
In normal 2-wire operations, the two wires within the diver communication cable is connected to the corresponding binding post (divers #1 and #2) on the surface unit. This allows the tender to talk to either diver individually, or both divers simultaneously. The divers may also communicate with each other when the tender engages the cross-talk switch. The surface unit speaker functions as speaker and microphone. When the system is used where conditions are noisy, the tender can switch off the speaker and use a headset and boom microphone; however, when using a headset with boom mic, the tender must still use the push-to-talk (PTT). The divers' communication is the primary signal. When the tender uses the PTT control, his signal becomes the primary signal.

If a speaker is located in a diving bell or recompression chamber, the M D1 can be used as the communications link between the divers and the outside.



# 4-Wire Mode

The 4-wire mode provides continuous open-line communications between the tender and divers. In this mode (black), everyone hears each other simultaneously. Therefore, the earphones, speakers and microphones must be isolated to prevent feedback. All earphones are connected in parallel—four wires are required to connect all stations: two for the microphones, and two for the headset and earphones. The diver earphones should be connected to the earphones' mode (black) binding post and microphones to the mic (red) binding posts on the surface unit. The phone plug on the tenders' headset should be connected to the headset phone jack. The red plug (tender's microphone) should be connected to the microphone jack. The diver's microphone can also be connected to either diver #1 and diver #2 jacks. When set in the 4-wire mode, everyone is online together, similar to a telephone conference call, as long as the tender is using a headset mic combo. If this combo is not used, the tender will be required to use the Push To Talk button to communicate. **NOTE:** The DIVER SELECT switch must be in the "BOTH" position!



**NOTE:**

In the four wire mode, the headset is mandatory, for **open line** communications. Not using a headset will require the tender to use the Push To Talk button.

# Charging the Batteries

---

The operating time for a fully charged battery is approximately 12 hours. The exact operating time depends on the age of the battery and the ambient temperature. Charging should be done with the unit turned off. Typical charge time from a low battery warning *when using the provided charger connected to a secure AC power supply* is three to four hours. If connected to another source like a vehicle that has its engine running and the vehicle battery voltage is between 13.8 and 14.7 volts, it's about an 8 hour charge depending on the condition of the battery.

When charging the batteries the GREEN LED power light will turn on and remain on for the entire time the unit is plugged in. The charger is designed to remain plugged into the supplied power and connected to the battery for extended time without damaging the battery. It is recommended that charging time not exceed 12 hours. The batteries do not have memory and can be placed on charge at any time. The charger for the MD1 . recommended to connect the two leads from the battery charger into the communicator first, and then followed by plugging the power cord from the charger into the supplied power second.



Match the Red and Black probes to the Red and Black receiving holes on the lower left panel of the communicator to connect the charge to the MD1 communicator.

## Power Indicators

There are two LED lights on each side of the Tender to Diver Volume control knob. The LED on the left is the power on indicator and will emit a strong green color when turned on and when charging or operating from an external power supply. The green LED will remain green until the battery drops below 8 volts. The LED on the right side of the control knob is RED in color and is the low battery warning light. When the battery level drops to 8 volts, the red light will turn on (solid). There is also a tone every 30 seconds that will be heard. When the battery level drops below 7 volts, the red light will begin to blink. The tone will also continue to be heard every 30 seconds.

---

---

Testing Communications Test the communications between the diver and the MD1. With the communicator (S) switched on, turn the speaker switch to “on” and adjust the volume to a comfortable level for both the diver and the MD1 operator.

In the 2 wire mode and the 4 wire mode without headset and boom microphone, the communicator functions similarly to a citizens band radio; i.e., the MD1 operator must depress the push to talk switch to speak to the diver. In the 4 wire mode, with headset and boom microphone, the communicator functions like a telephone conference call; i.e., everyone on the line can hear and speak to everyone else. In either mode, for the diver to talk top side, it is only necessary for him to speak into the oral/nasal microphone in his mask or helmet. If two divers will be working together using 2 wire mode, test the cross-talk functions at this time as well. To extend the life of the battery, it is recommended that the communications be used in the 4 wire mode. Operation as a 2 wire system uses relays inside the unit which will cause a higher battery drain.

## **B CAUTION**

**In the 2 wire mode, when the push-to-talk switch is depressed, the MD1 operator should keep all of their communications short (10–15 seconds) at any one time. This allows the diver to call for assistance if necessary.**

Plug the earphone connectors on the diver’s umbilical into the earphone jacks (Black) on the communicator. Plug the microphone connectors on the diver’s umbilical into the microphone jacks (Red) on the communicator. This will create a 4 wire system/round robin system. Test the system and adjust all volume controls.

Unplug the earphone connectors on the diver’s umbilical from the communicator and reinstall them in the connectors attached to the plugs for the microphone (stack the jacks). This will change the communicator to a 2 wire system. Test this system and adjust volumes. If there are no communications, recheck all of the connections to ensure they are tight at each junction. If the MD1 has been operating in a coastal environment, look for corrosion on the top side connectors which may interfere with the communications. If corrosion is evident, disassemble the connectors, clean, and retest. If corrosion is heavy, replace the top side connectors on the umbilical. Substitute other masks or umbilicals to test for failures in the microphones or umbilical. Substitute one piece of new gear at a time to track the fault down. If the fault is in the mask

---

---

or helmet, replace the earphones or microphones as needed. If the fault is in the umbilical, disconnect the umbilical and carefully inspect its length for damage. Look for obvious nicks or cuts. If there is physical damage to the outside of the communications wire there probably is a break on the inside, too. Test the continuity of the wire end-to-end with a volt-ohmmeter. Uncoil the umbilical and lay it out flat with the two ends close to each other. Set the volt-ohmmeter to resistance (ohms) and hold one probe to one prong on an umbilical connector plug and touch the other probe from the meter to the wires (or connector) at the opposite end of the diver's umbilical. Upon locating the other end of the same wire, the meter should indicate zero resistance, i.e., there is a complete, uninterrupted circuit. If touching none of the wires at the other end of the umbilical produces a zero reading, this indicates a complete break in the wire. If the reading is not a steady zero and the reading changes as the umbilical is moved, this indicates a partial break, and communications will be intermittent. In either case, a waterproof splice must be made in the wire.

## Helpful Hints

1. Before diving operations, check to be sure *microphone, earphones and wire connections* are functioning properly. Ninety percent (90%) of all problems in communications turn out to be a problem with one of the above.
  2. When in 4-wire mode, you must use headset with boom microphone and the DIVER SELECTOR switch must be in the "BOTH" position, to have open communications between divers and the divers to topside. If feedback is present, switch the front panel SPEAKER to "OFF" (see Panel Functions 17 on page 5).
  3. Avoid excessive tender-to-diver volume. Most of the time, when there is *too much volume*, the diver will hear distortion and ask for more volume.
  4. Before diving operations always check the battery, a solid green LED light should be on, indicating a charged battery. The red colored LOW BATTERY LED indicator light (see Panel Functions 13 on page 5) indicates the battery needs to be charged or replaced.
  5. Make certain all umbilical communication wires are secured into topside banana connectors. Verify that topside connectors are securely inserted into topside jacks and in the proper place.
-





**iINDiC<sup>TM</sup>**

**By Planet Scuba India**



**Contact: [service@Planetscubaindia.com](mailto:service@Planetscubaindia.com)**

**Mobile: +91 8431242332**

